

Boğaziçi University

Faculty of Engineering

Department of Civil Engineering



Boğaziçi University

Boğaziçi University was officially established in 1971, although its history dates back to 1863, when Robert College was founded as the first American University outside the US.

Boğaziçi University is one of the most prominent educational institutions in Turkey with top-ranked undergraduate and graduate programs in engineering, social sciences, administrative sciences, education, and applied sciences

The faculty and researchers with a wide range of expertise are actively engaged in research within departments, laboratories and research centers

One focus of Boğaziçi University's vision is to increase its competitiveness in academic research and to be among the top research universities in the world.

Boğaziçi University

Boğaziçi University's current rankings:

234th Best Global Universities

29th Best Global Universities in Asia

1st Best Global Universities in Turkey

265th Engineering

66th Physics

Department of Civil Engineering

- ▶ **Top-ranked Civil Engineering department in Turkey, in terms of admission scores.**
- ▶ **Undergraduate enrollment: 60 students from the top 8000 amongst more than 1.5 million high school graduates.**

- ▶ **400+ BSc students**
- ▶ **125+ MS students**
- ▶ **60+ PhD students**



- ▶ **About 60% of our graduates work in the construction sector, while the other 40% work in diverse fields.**

- ▶ **CE Programs: BSc, MS (thesis), PhD**
Executive MS – Construction Engineering and Management (non-thesis)

Department of Civil Engineering

- ▶ **16 full-time faculty**
- ▶ **15 part-time faculty offering specialty courses**
- ▶ **International education and academic/work experience**
- ▶ **Strong ties and collaboration with the industry**
- ▶ **All full-time faculty actively involved in research.**

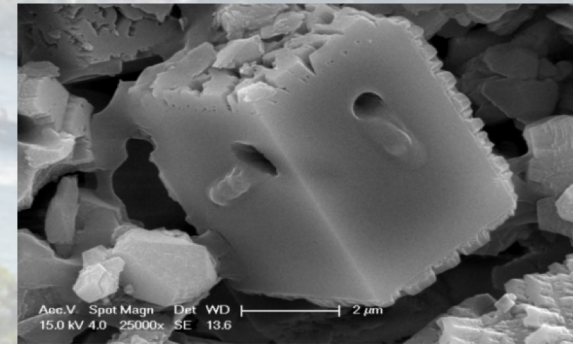


Fields of Research

- ▶ **Structural Engineering**
- ▶ **Geotechnical Engineering**
- ▶ **Construction Materials**
- ▶ **Transportation/Traffic Engineering**
- ▶ **Coastal and Ocean Engineering**
- ▶ **Construction and Project Management**

- ▶ **Laboratory Facilities:**
 - ▶ **Structural Engineering and Health Monitoring Laboratory**
 - ▶ **Soil Mechanics and Geotechnical Engineering Laboratory**
 - ▶ **Construction Materials Laboratory**
 - ▶ **Coastal Engineering Laboratory**

 - ▶ **Traffic Laboratory (for real-time traffic monitoring)**
 - ▶ **Hydraulics Laboratory (educational)**



Thank you

